



Accessing MTG Data in Africa

Erdem ERDI
Data Services User Support Officer,
EUMETSAT

17-EUFA Online sessions / 10-11 June 2026



EUMETSAT Data Access Services

Portfolio overview

Push Data Services

EUMETCast Africa and Terrestrial

Online Data Services

EUMETView, Data Store, Data Tailor

Summary

Push services



EUMETCast Terrestrial
Near-real-time data delivery
via terrestrial networks



EUMETCast Satellite

Pull services



EUMETView
Viewing your data



**EUMETSAT
Data Store**
Improving data access



Data Tailor
Customising your data



Data Centre



WEkEO



Direct dissemination

Shared services



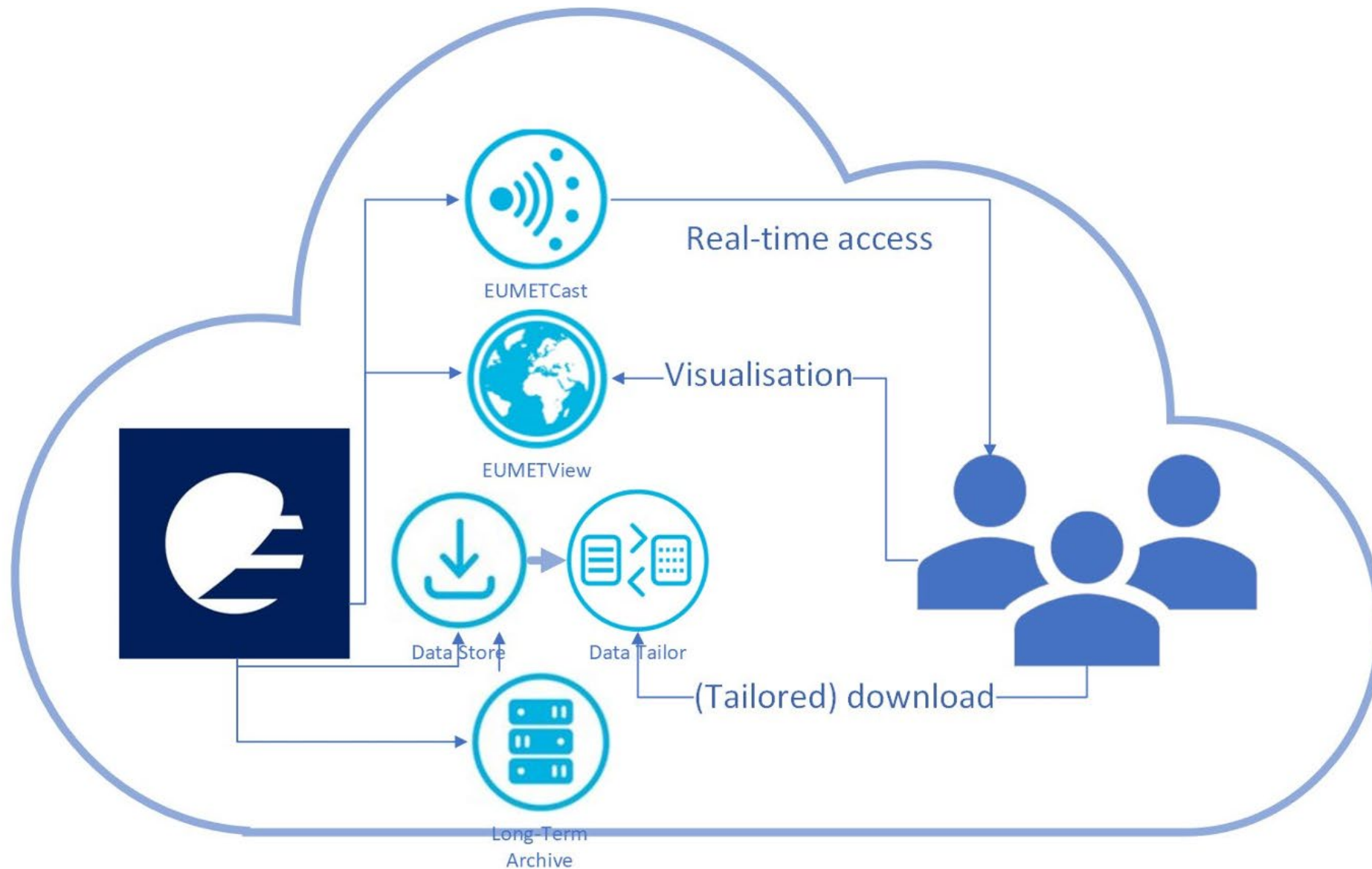
**European
Weather Cloud**
Hosted data processing



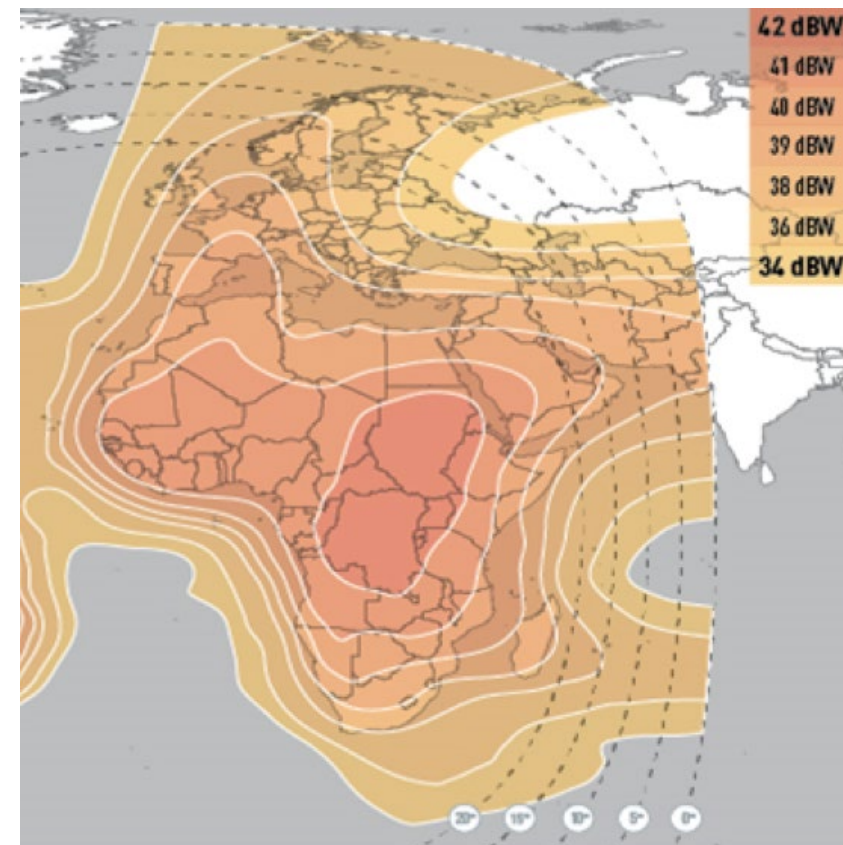
WIS



EUMETSAT Data Access Services

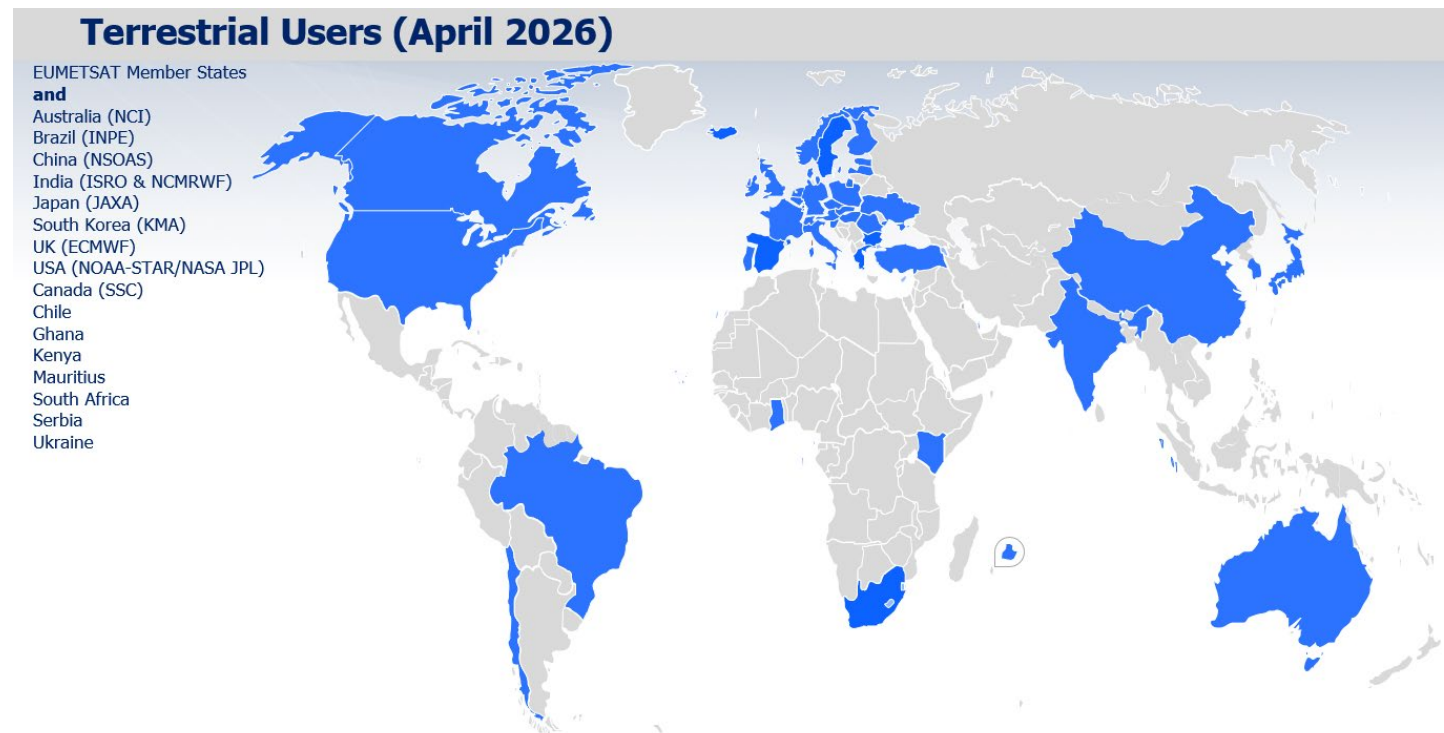


- 2.4 - 3.6 meter antenna
- DVB-S2 receiver
- **Very high availability**
- **Very low latency**
- Customised FCI L1c and L2 data
- Uncustomed LI L2 data
- Customisations are subject to evolutions and improvements

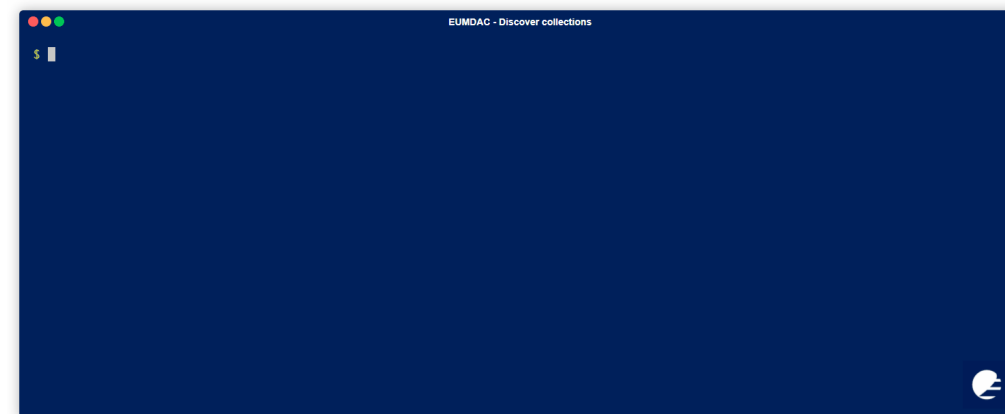
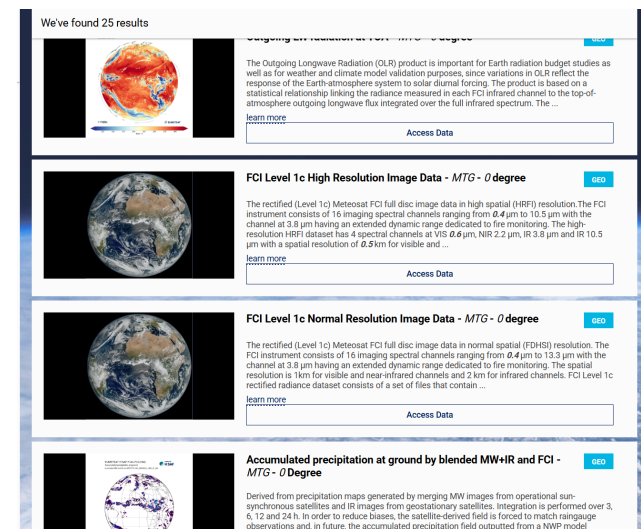


C-band downlink coverage of the EUMETcast Africa Service and a sample antenna

- Connectivity with NREN or a stable internet connection, with enough bandwidth available
- **Very high availability**
- **Very low latency**
- **Full** MTG-I FCI and LI data
- Includes **MTG-S**
- No outdoors equipment

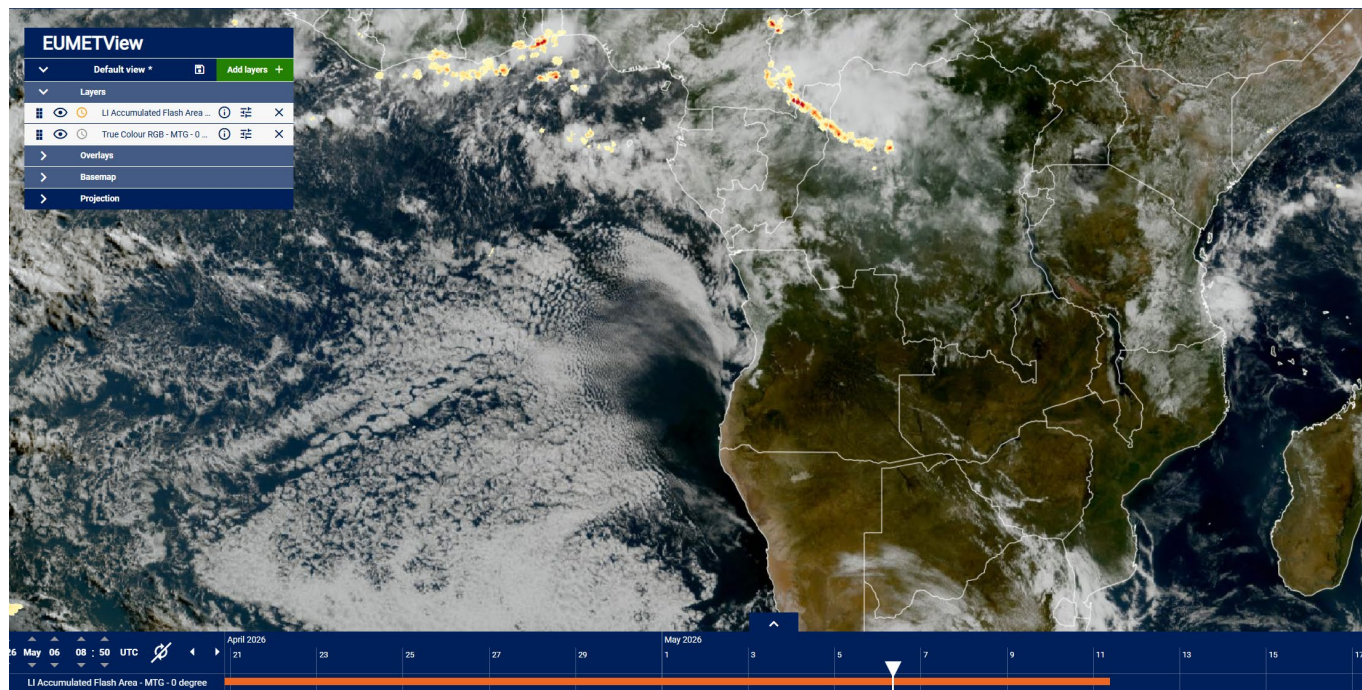


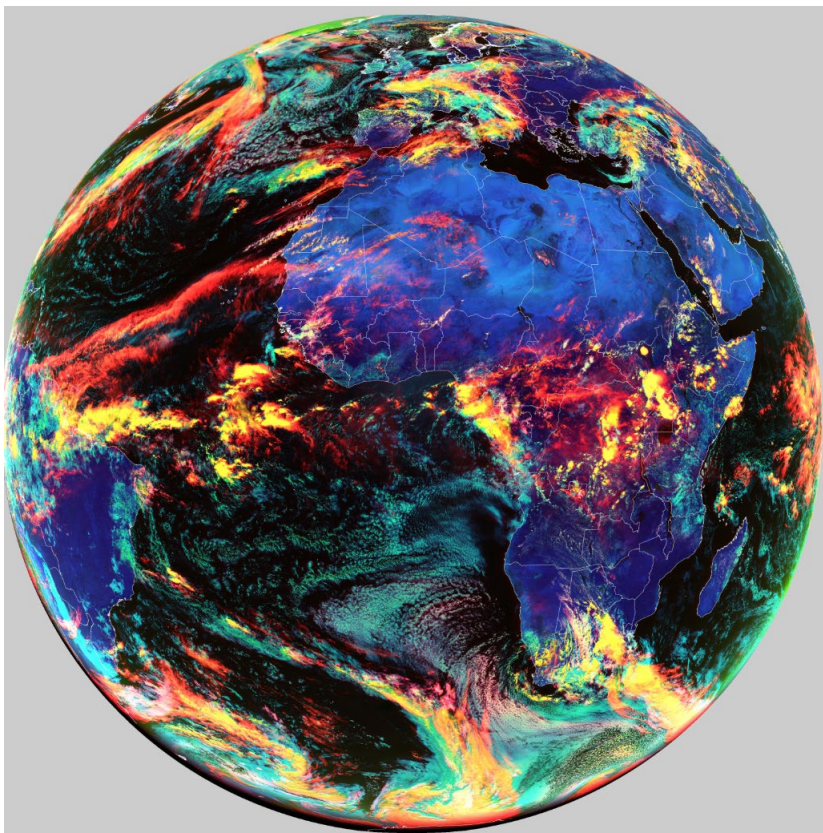
- Pull data which you need and when you need it (online)
- High availability (>95%)
- Low latency (<15 minutes)
- **Full** MTG-I FCI and LI data
- Includes **MTG-S**
- **Easy to use** WebUI and command line EUMDAC tool, which can also automate the downloads



- Data Tailor can customise data **before being downloaded** via Data Store
- Data Tailor can also be installed locally to customise data **after download** via EUMETCast or Data Store
- **EUMDAC** can also call Data Tailor to automate the process
- Wide range of customisations:
 - Format change
 - Projection change
 - ROI extraction
 - ...

- Visualise or download imagery which you need and when you need it (online)
- High availability (>95%)
- Low latency (<15 minutes)
- Expanding list of MTG-I FCI and LI imagery
- **Easy to use** WebUI and API, which can also automate the imagery downloads





Example:

The MTG FCI Cloud Type RGB can be downloaded in GEOS projection in every 10 minutes automatically, by using fixed URLs, via either of the following fixed commands

curl -X GET

```
"https://view.eumetsat.int/geoserver/wms?service=WMS&version=1.3.0&request=GetMap&layers=mtg_fd:rgb_cloudtype,backgrounds:ne_10m_coastline,backgrounds:ne_bounding_lines_land&bbox=-650000,-650000,650000,650000&width=3600&height=3600&srs=AUTO:97004,9001,0,0&styles=&format=image/jpeg&bgcolor=0xCCCCCC" --output "filename.jpeg"
```

wget -P /path/to/your/folder -O filename.jpeg

```
"https://view.eumetsat.int/geoserver/wms?service=WMS&version=1.3.0&request=GetMap&layers=mtg_fd:rgb_cloudtype,backgrounds:ne_10m_coastline,backgrounds:ne_bounding_lines_land&bbox=-650000,-650000,650000,650000&width=3600&height=3600&srs=AUTO:97004,9001,0,0&styles=&format=image/jpeg&bgcolor=0xCCCCCC"
```

- There are multiple ways of accessing MTG data and other satellite data from EUMETSAT data access services
- Various data services accommodate different needs and complement each other
- For details or questions, please
 - visit the **User Portal** (<https://user.eumetsat.int>) or
 - contact our **User Service Helpdesk** (ops@eumetsat.int)



Thank you!
Questions are welcome.